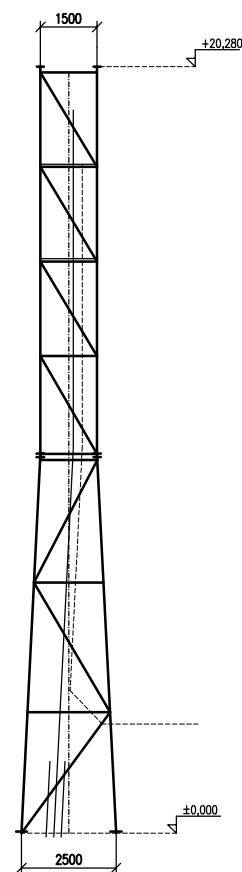
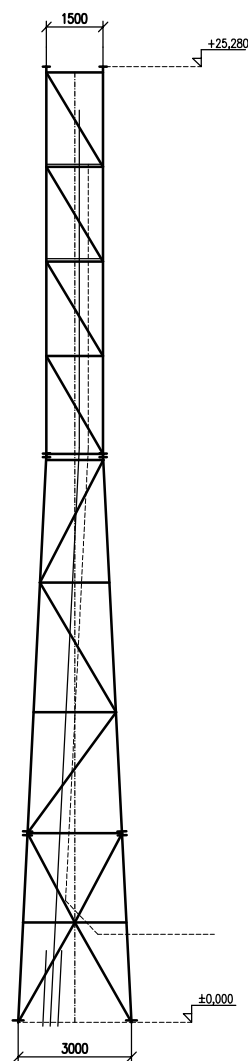


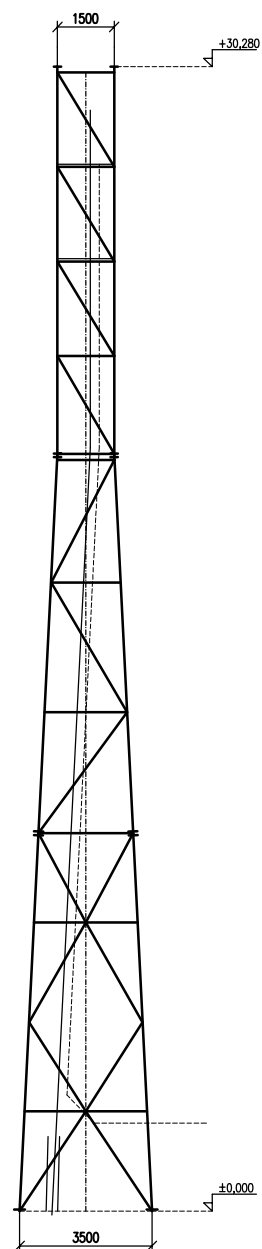
KORAS EPL 20.6.5



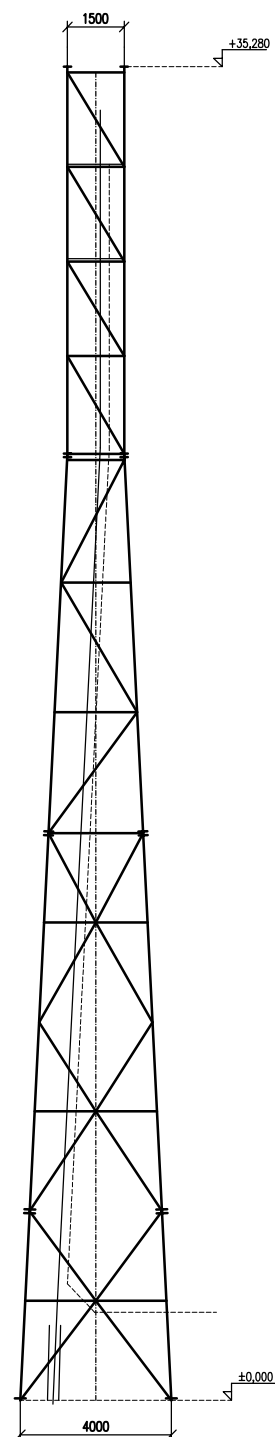
KORAS EPL 25.6.5



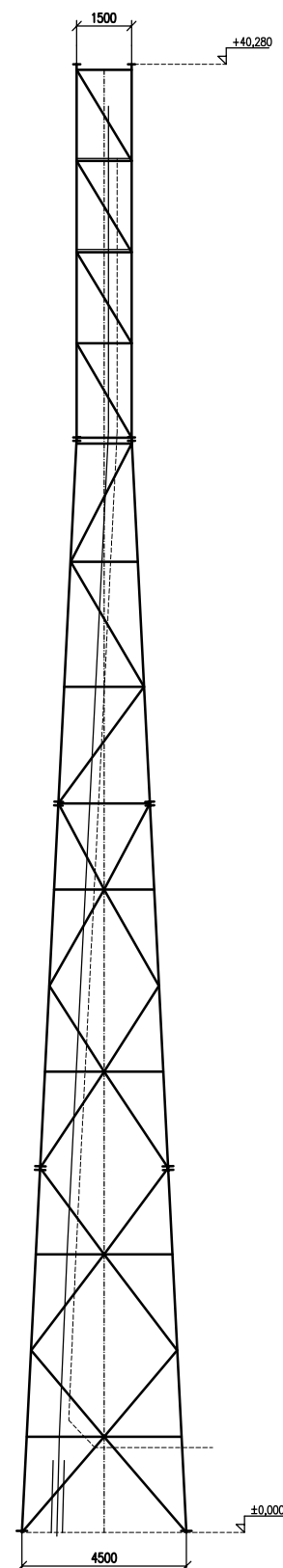
KORAS EPL 30.6.5



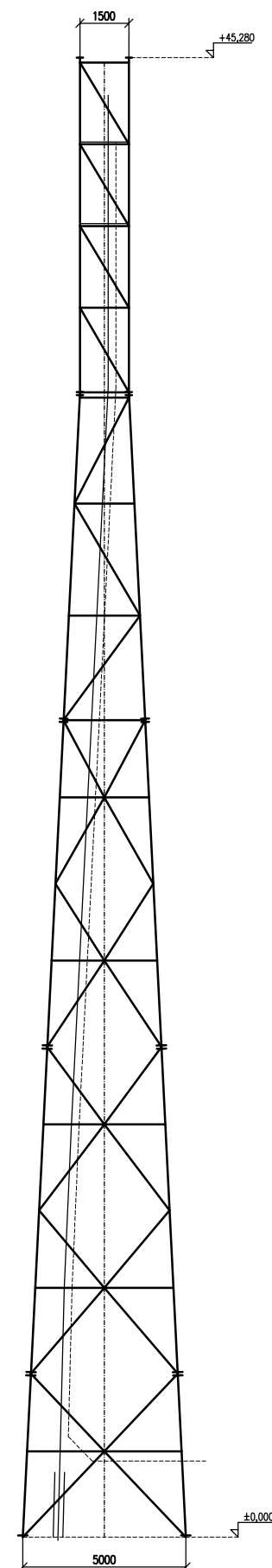
KORAS EPL 35.6.5



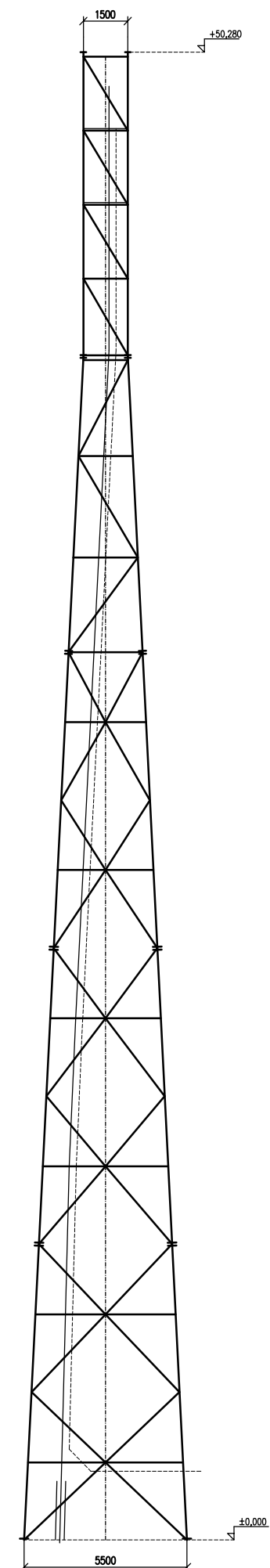
KORAS EPL 40.6.5



KORAS EPL 45.6.5



KORAS EPL 50.6.5



TYPOVÉ ČTYŘBOKÉ PŘÍHRADOVÉ STOŽÁRY – typ KORAS V, verze EPL xx.6.5

- návětrná plocha antén 6m² vč. tvarového součinitele
- větrová oblast 5
- natočení ve vrcholu max.1,0° pro zatížení dynamickým větrem podle ČSN 73 0035